

Base Image: October 23,
2007 Orthophoto



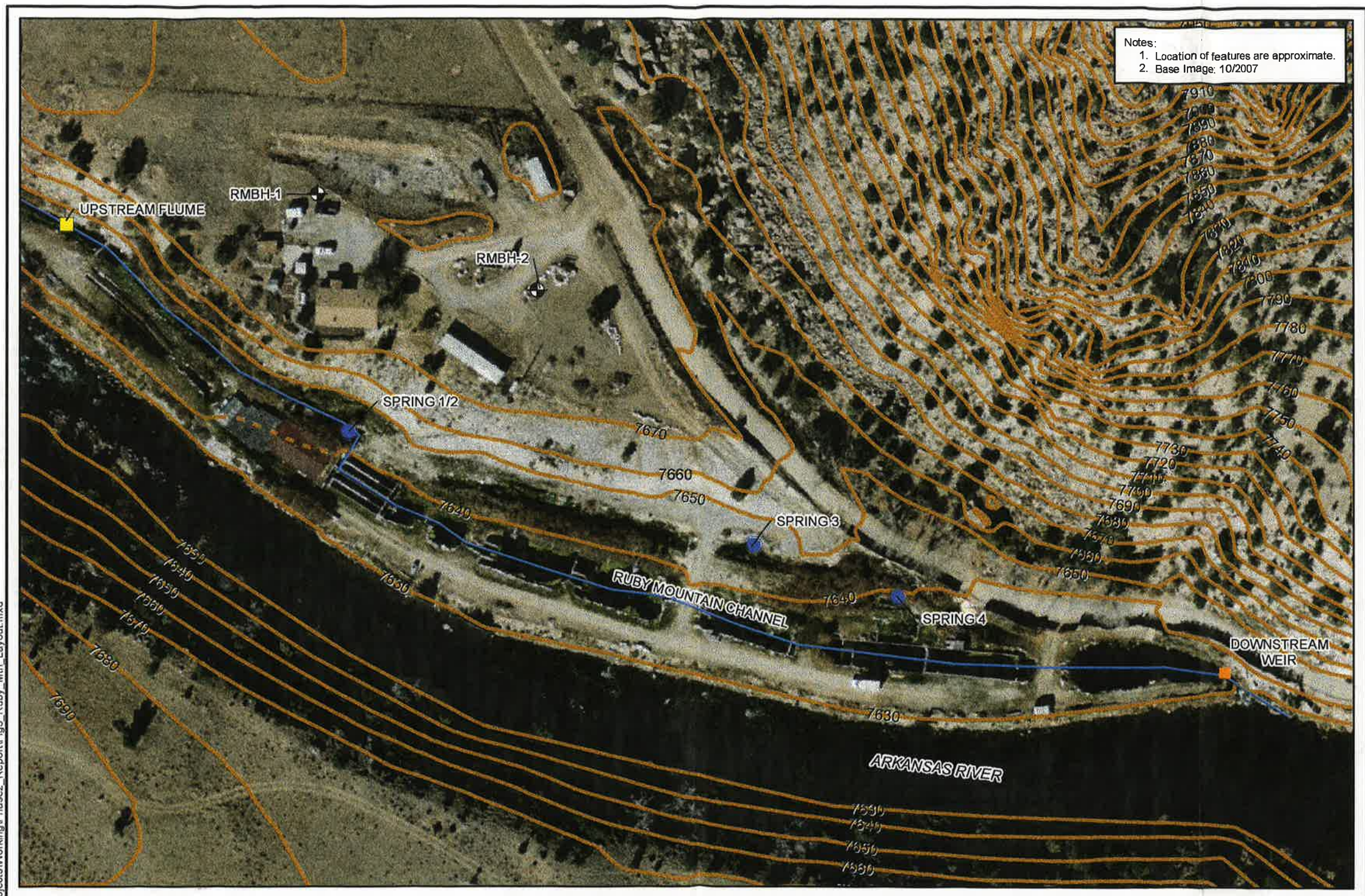
Legend

- Monitoring Well (black diamond with crosshair)
- Borehole (green diamond with crosshair)



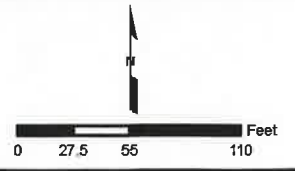
NESTLÉ WATERS NORTH AMERICA INC.
CHAFFEE COUNTY, COLORADO
DATE: 02/19/10 DMRN: TKW/fg Revision: 1

BOREHOLE AND MONITORING WELL
LOCATIONS, UP-VALLEY LTM NETWORK
FIGURE 2



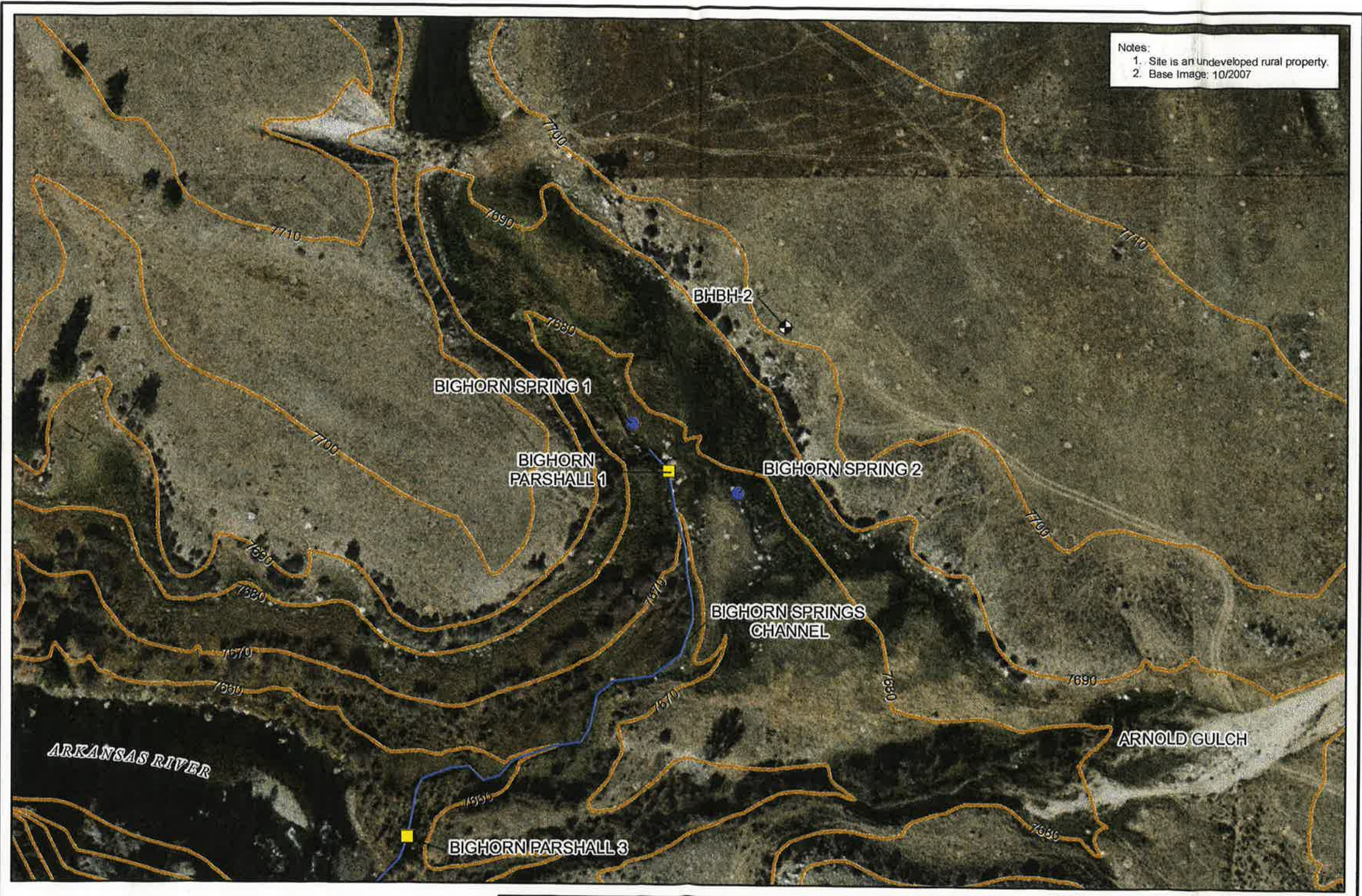
Notes:
 1. Location of features are approximate.
 2. Base Image: 10/2007

T:\Nestle_Natrop\Projects\Working\Phase2_Report\Fig3_Ruby_Mtn_Layout.mxd



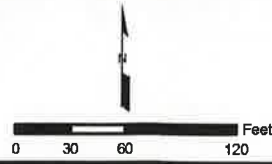
NESTLÉ WATERS NORTH AMERICA INC.
 CHAFFEE COUNTY, CO
 DATE: 04/29/2010 | DRWN: TKW/ftc | Revision: 4

RUBY MOUNTAIN SPRINGS LAYOUT
FIGURE 3



Notes:
 1. Site is an undeveloped rural property.
 2. Base Image: 10/2007

T:\Nestle_Nathrop\Projects\Working\Phase2_Report\Fig4_Bighorn_Layout.mxd



NESTLÉ WATERS NORTH AMERICA INC.		BIGHORN SPRINGS LAYOUT	
CHAFFEE COUNTY, CO			
DATE: 02/19/2010	DRWN: TKW/fc	Revision: 3	FIGURE 4